

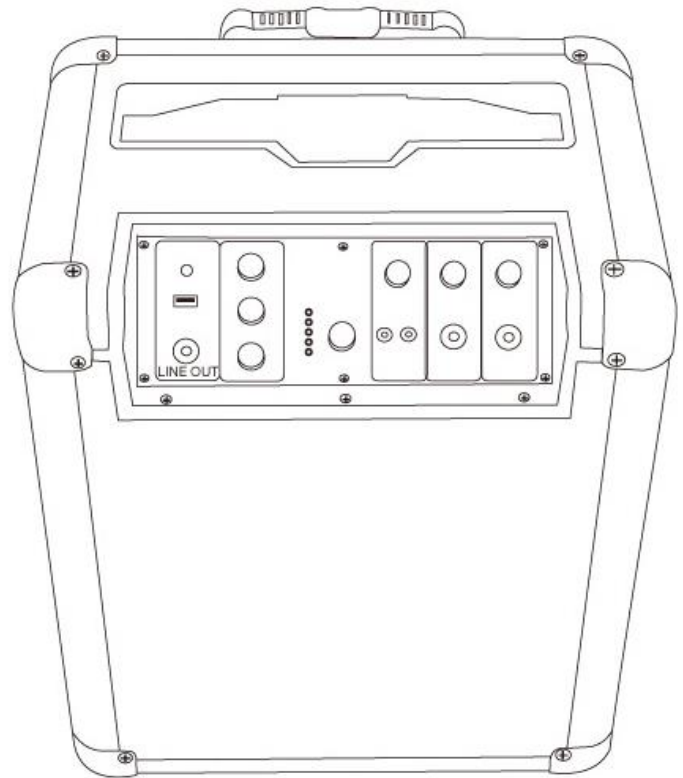
Wonky Monkey

WM SP-6000 Party Box Bluetooth speaker

User Instructions

Specifications

Model	Party Box WM SP-6000
Charge (AC socket)	AC 240V/ 50 ~ 60Hz
Battery	12V 7A
Audio	2x Mic input (6.3mm) Wireless (Bluetooth)
Bluetooth	V2.1+EDR (10m range)



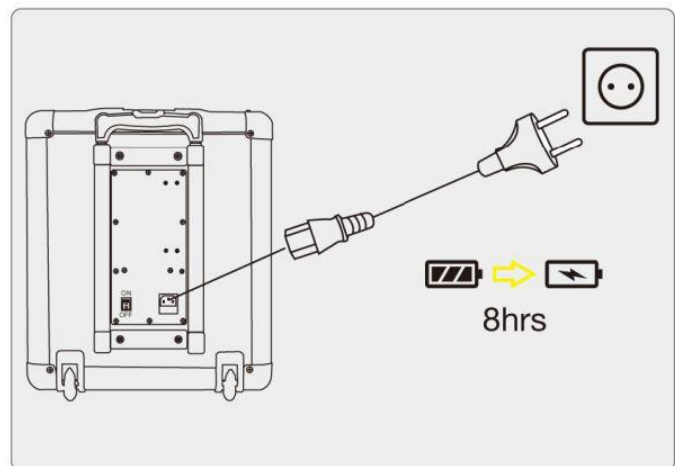
Included

1x	Party box
1x	Microphone
1x	Power cable
1x	User manual
1x	CE Statement

How to charge the Wonky Monkey Party box?

Connect the power cable plug (included) to a wall outlet socket and the power cable socket to the Wonky Monkey AC connector to charge the battery. Use the power switch on the lower back to turn on the Party Box

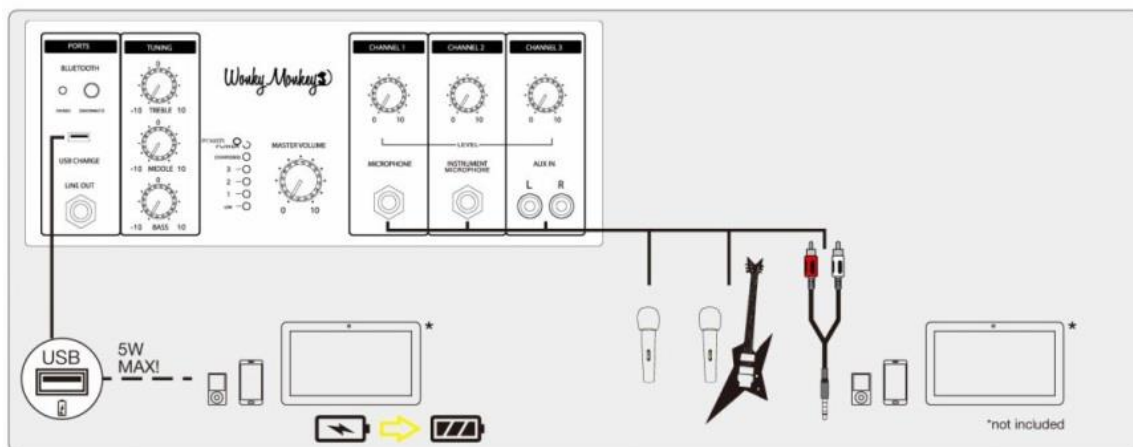
1 How to connect power and recharge



How to using Microphone for Karaoke function on the Wonky Monkey Party box?

Connect the 6.3mm plug on the microphone cable to the mic port on the Party Box(1 or 2) and adjust the volume of the input to the desired volume and speak/sing into the mic.

2 Connection



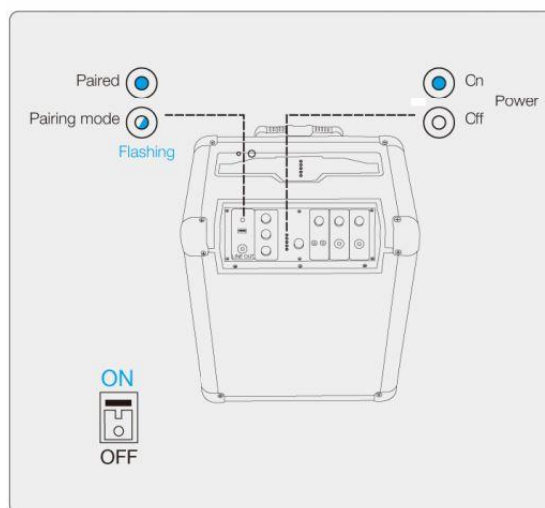
3 How to connect: Step 1

How to play music on the Wonky Monkey Party box?

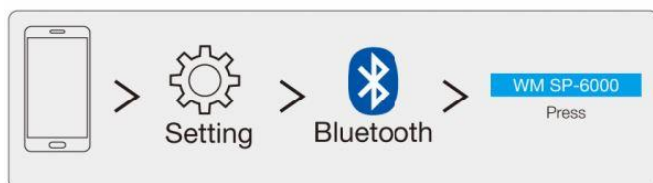
Connect the WM SP-6000 Party Box either wirelessly (Bluetooth) or wired (RCA/6.3mm audio cable-not included-) to an audio source. Bluetooth pairing: the blue LED blinks when the Party Box is turned on, turn on Bluetooth on your audio player pair it with Party Box WM SP-6000. Play music on your audio player and it will play wirelessly on your Wonky Monkey Party box. Switch it off when not in use to preserve the battery.

Using Wonky Monkey Party box to charge your mobile accessories.

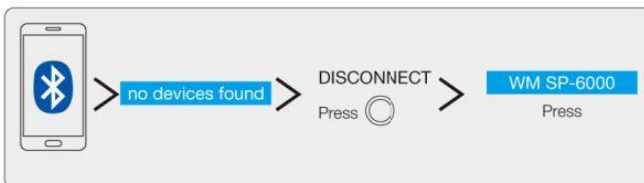
Wonky Monkey Party box provide a USB power socket for 5V1.5A power source which can charge a USB powered smartphone or accessory.



4 How to connect: Step 2



5 Wireless-Troubleshooting

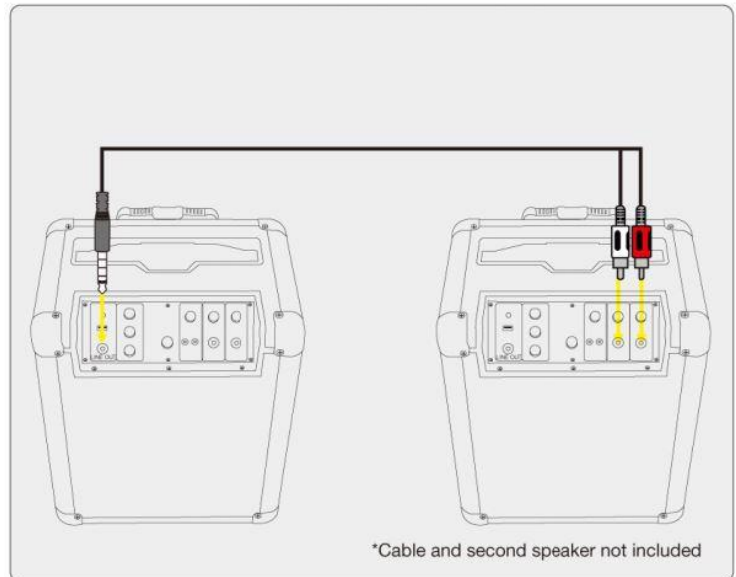


How to connect two speakers.

You can connect two Party Box speakers to amplify the sound and reach. Use a RCA/6.3mm audio cable -not included- to connect the AUX-in port of the first Party Box to the RCA output of the second Party Box (second Party Box sold separately).

6 Line-in link

Can link 2 speaker by line-in link



Warnings

Do not expose the Bluetooth headphone to a heat source or hot environment.

Do not short-circuit the Bluetooth headphone. Do not submerge or expose the speaker to fluids.

Do not pierce, break, twist, bend, throw, hit or apply and pressure to the Bluetooth headphone.

Do not disassemble or alter the outside cover of the Bluetooth headphone.

Do not holding or transport the Party box upside down at any time to prevent battery damage.

6 Warning

